

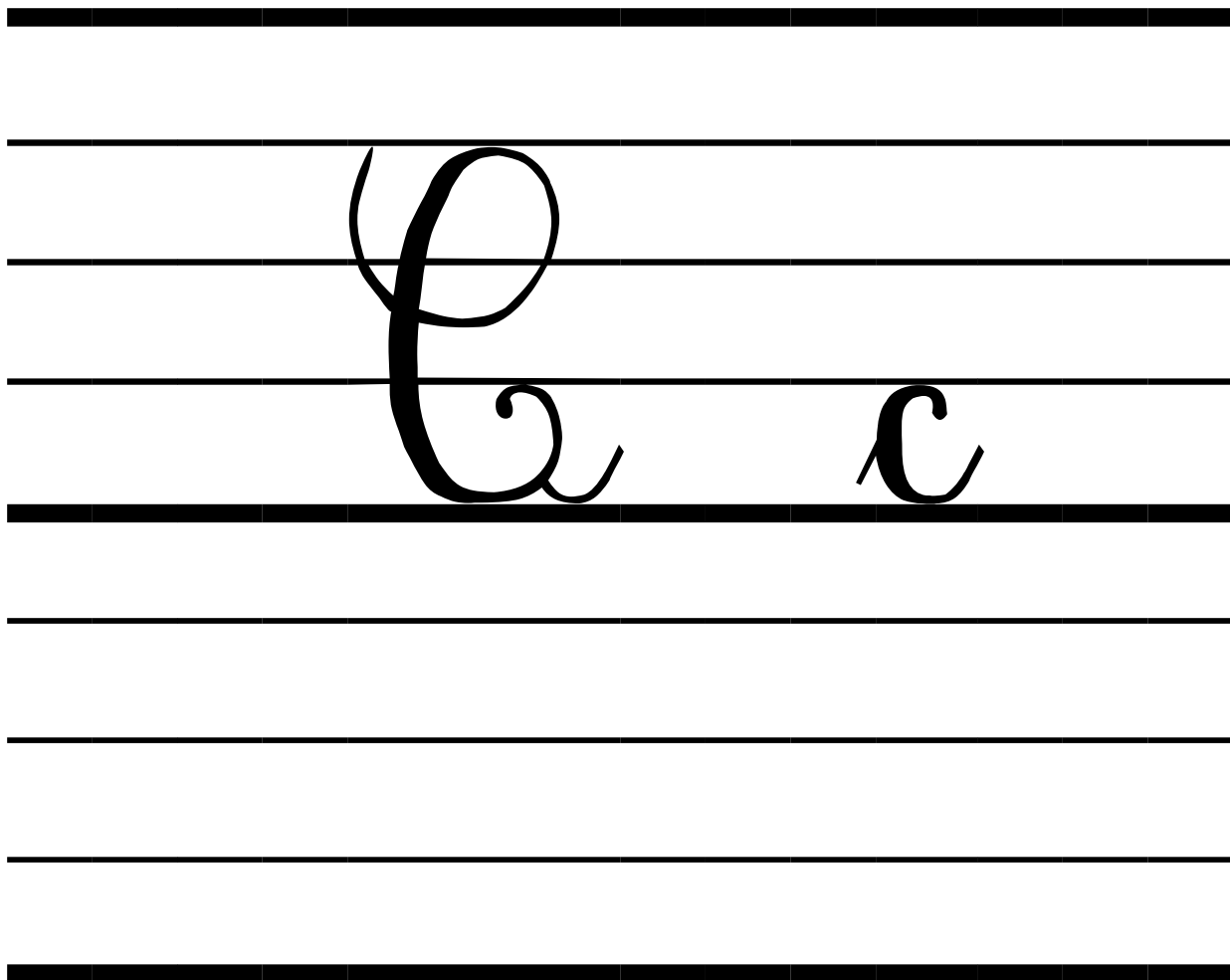
A a

B

b

B

b

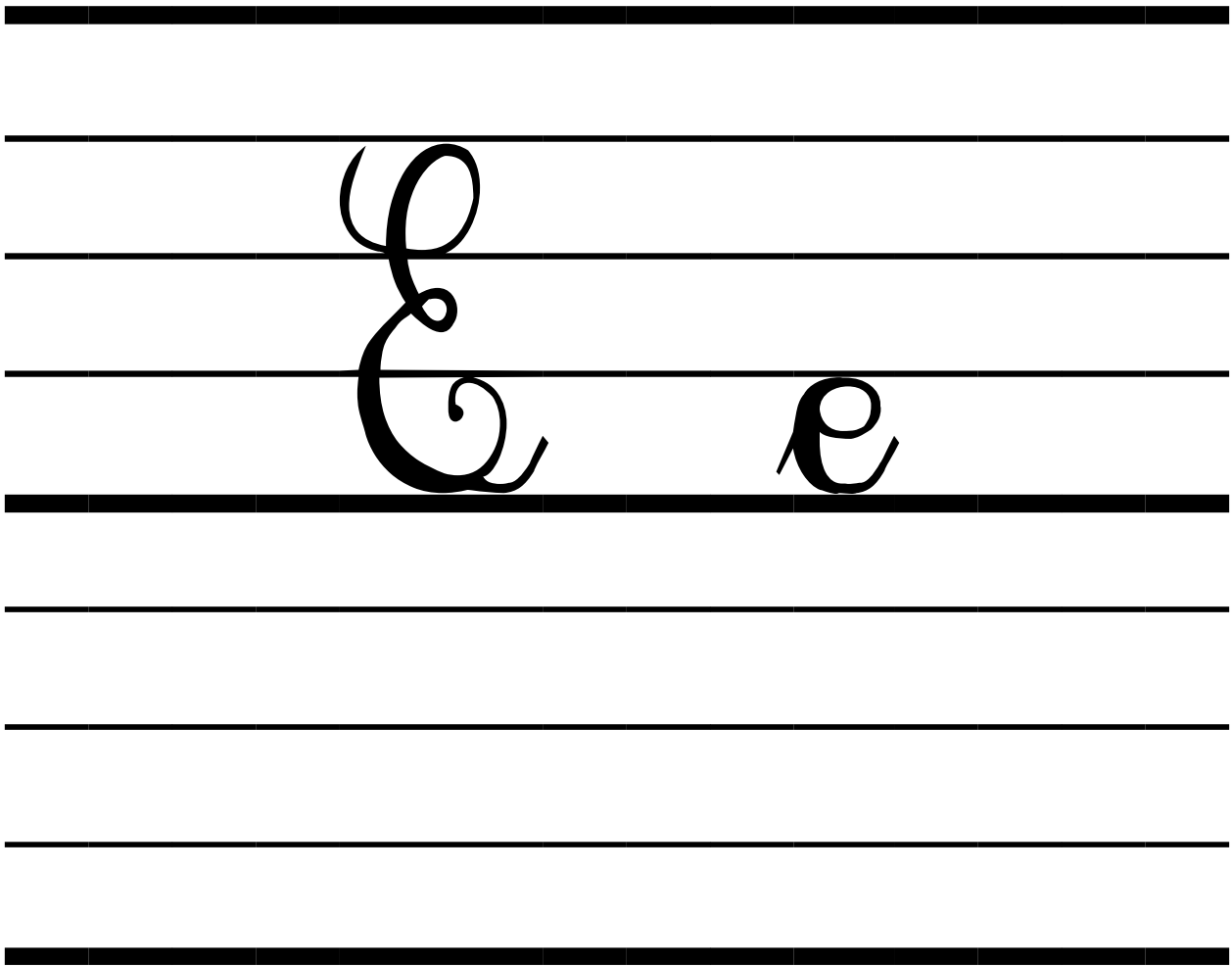


C

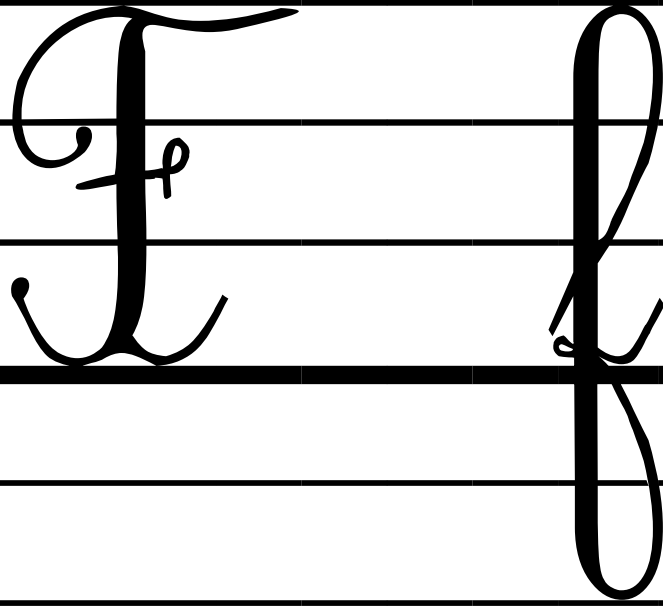
c

D d

D d



**E e**



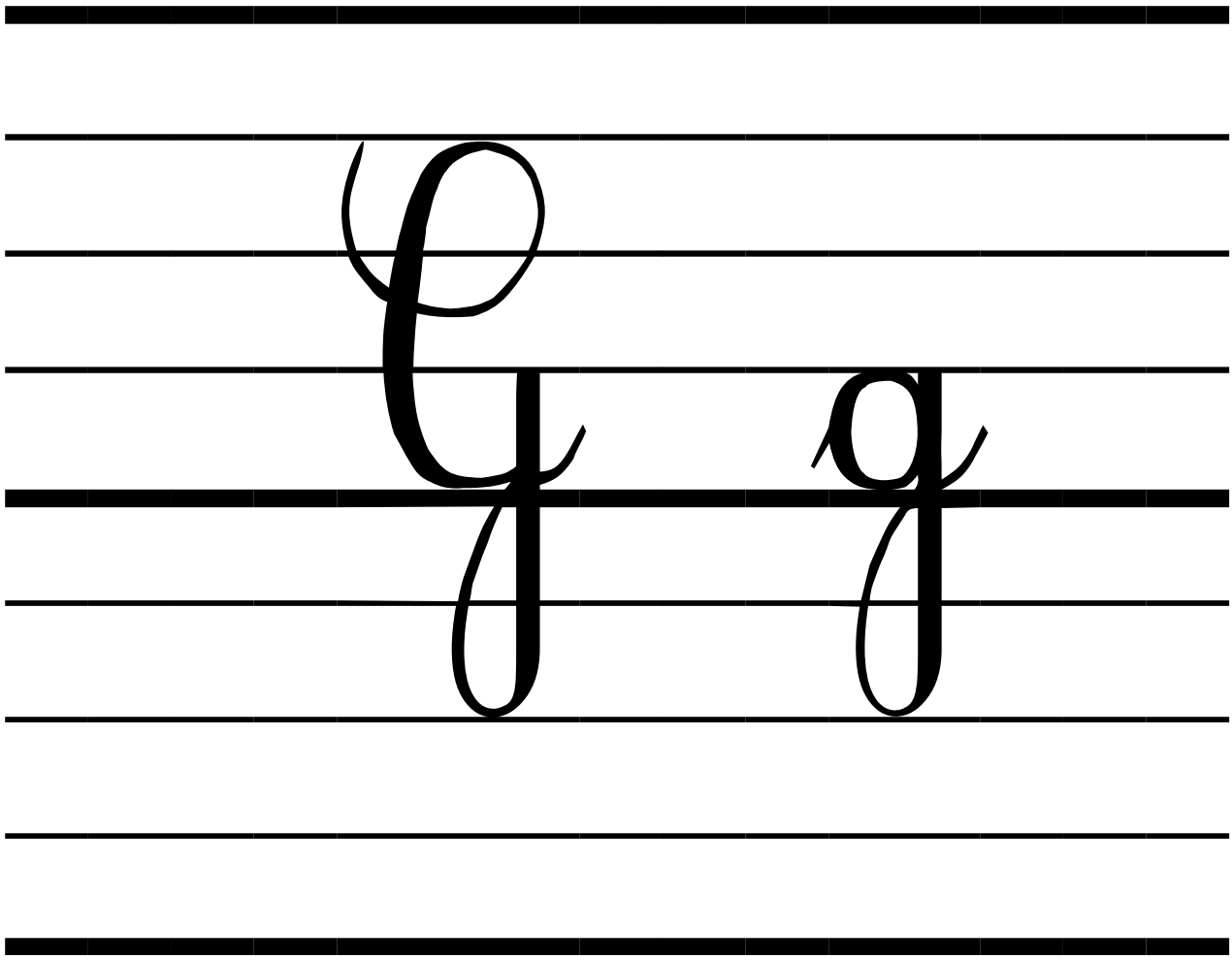
F f

A set of handwriting lines consisting of a top thick line, a middle thin line, a baseline thin line, and a bottom thick line. The cursive uppercase letter 'F' is positioned between the middle and baseline lines. The cursive lowercase letter 'f' is positioned between the middle and bottom thick lines, with a small loop at the top and a tail extending below the baseline.

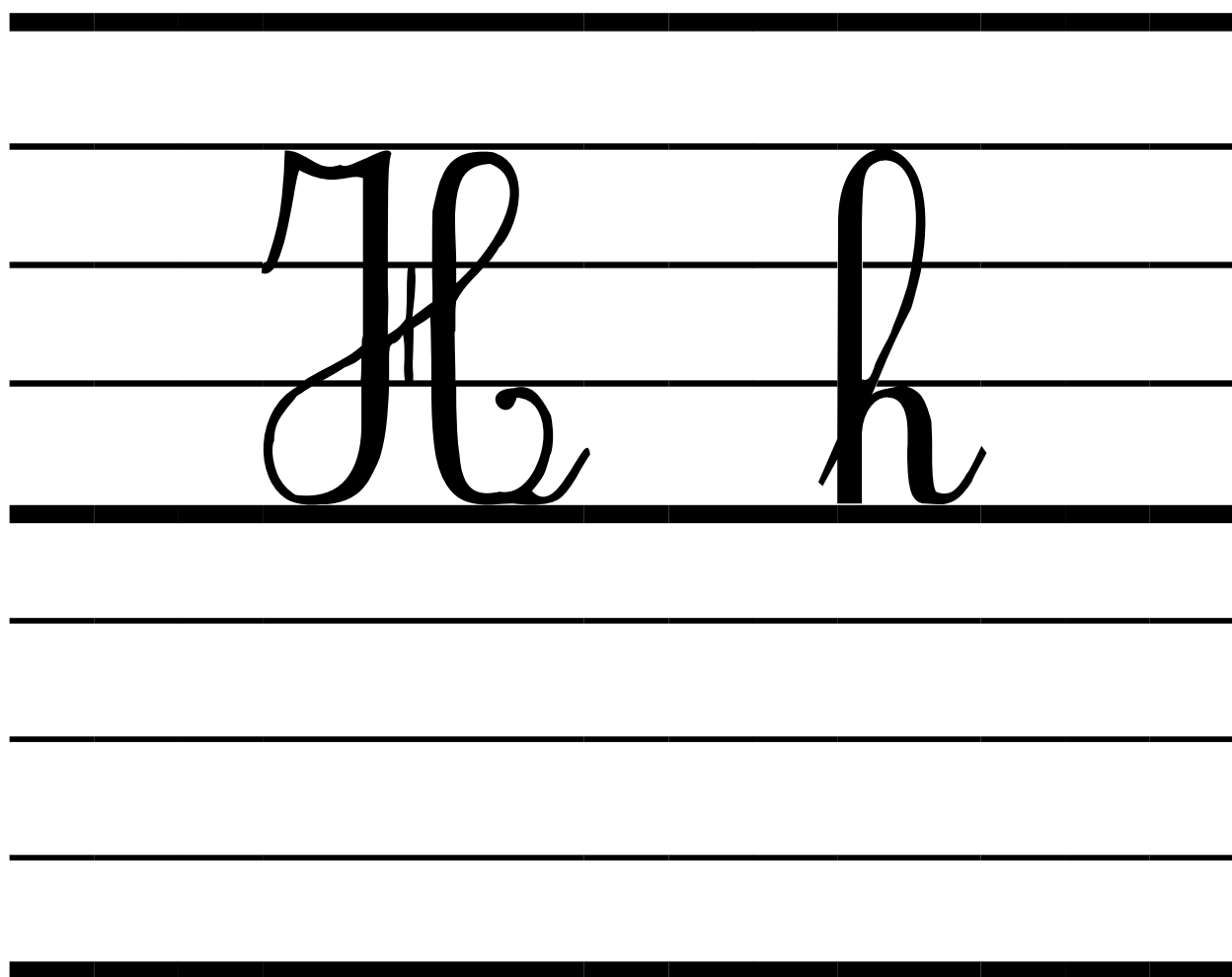


F f

The block uppercase letter 'F' and lowercase letter 'f' are shown in a simple, bold, sans-serif font. The 'F' has a vertical stem and two horizontal bars. The 'f' has a vertical stem, a curved top, and a horizontal crossbar.

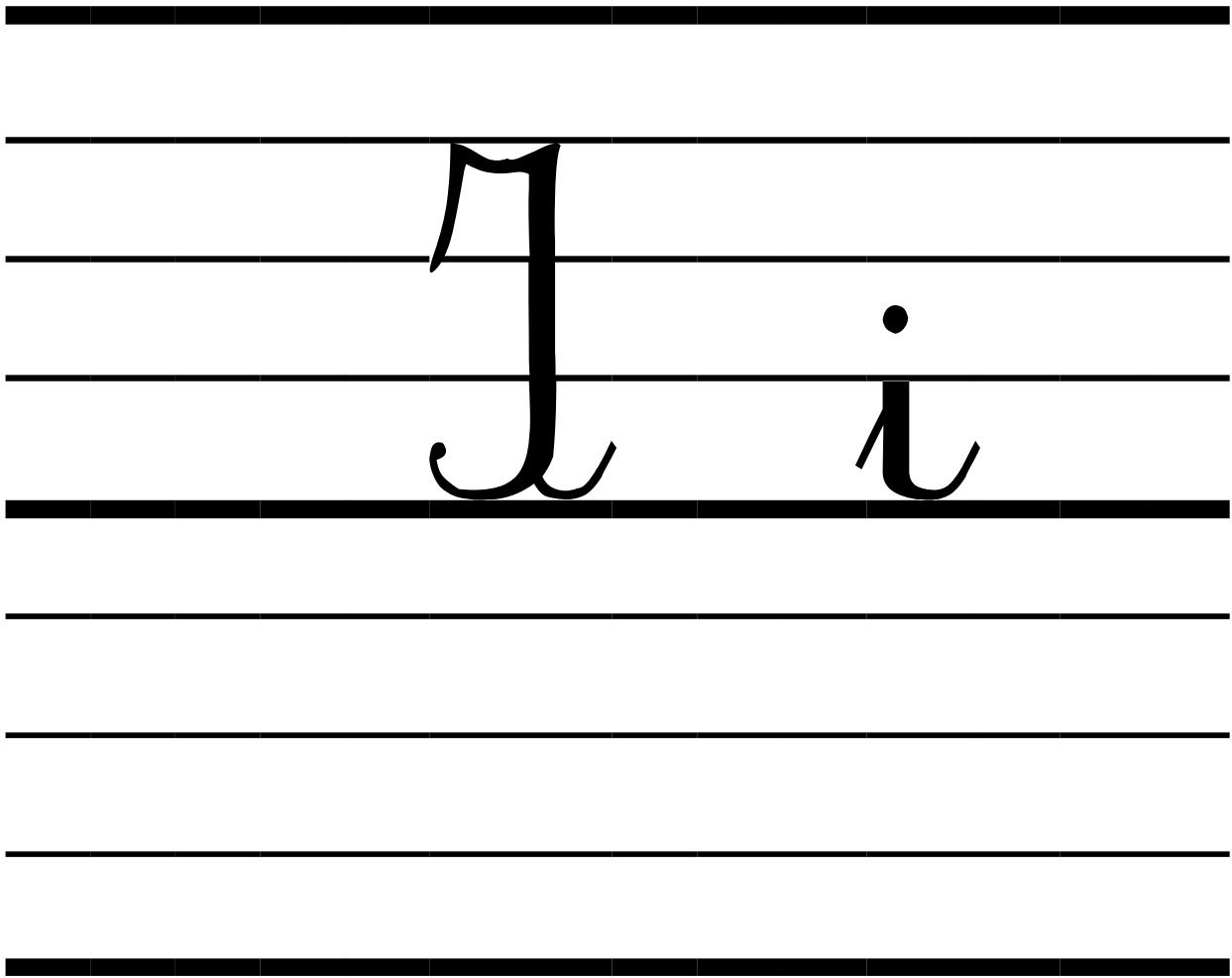


G g

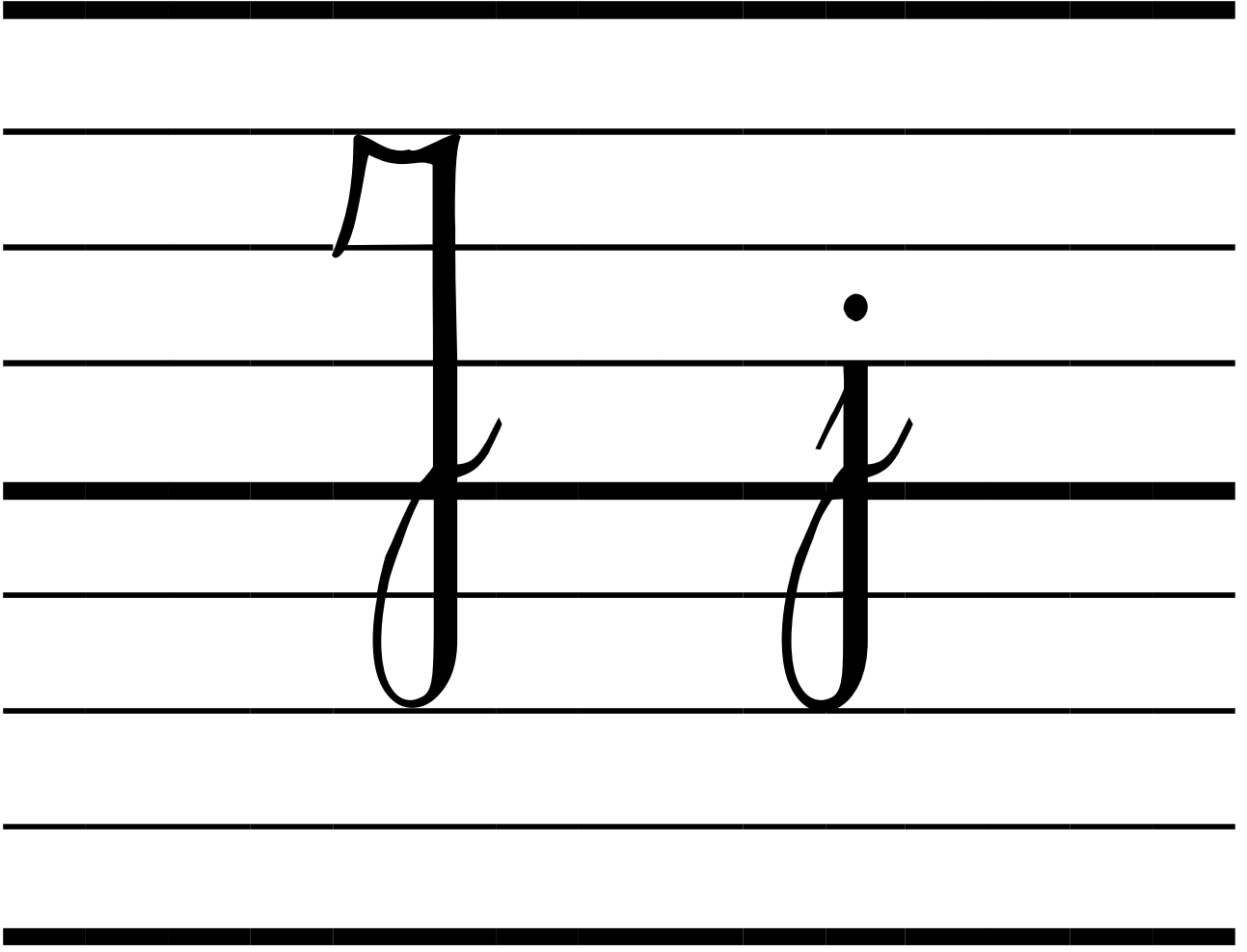


H h

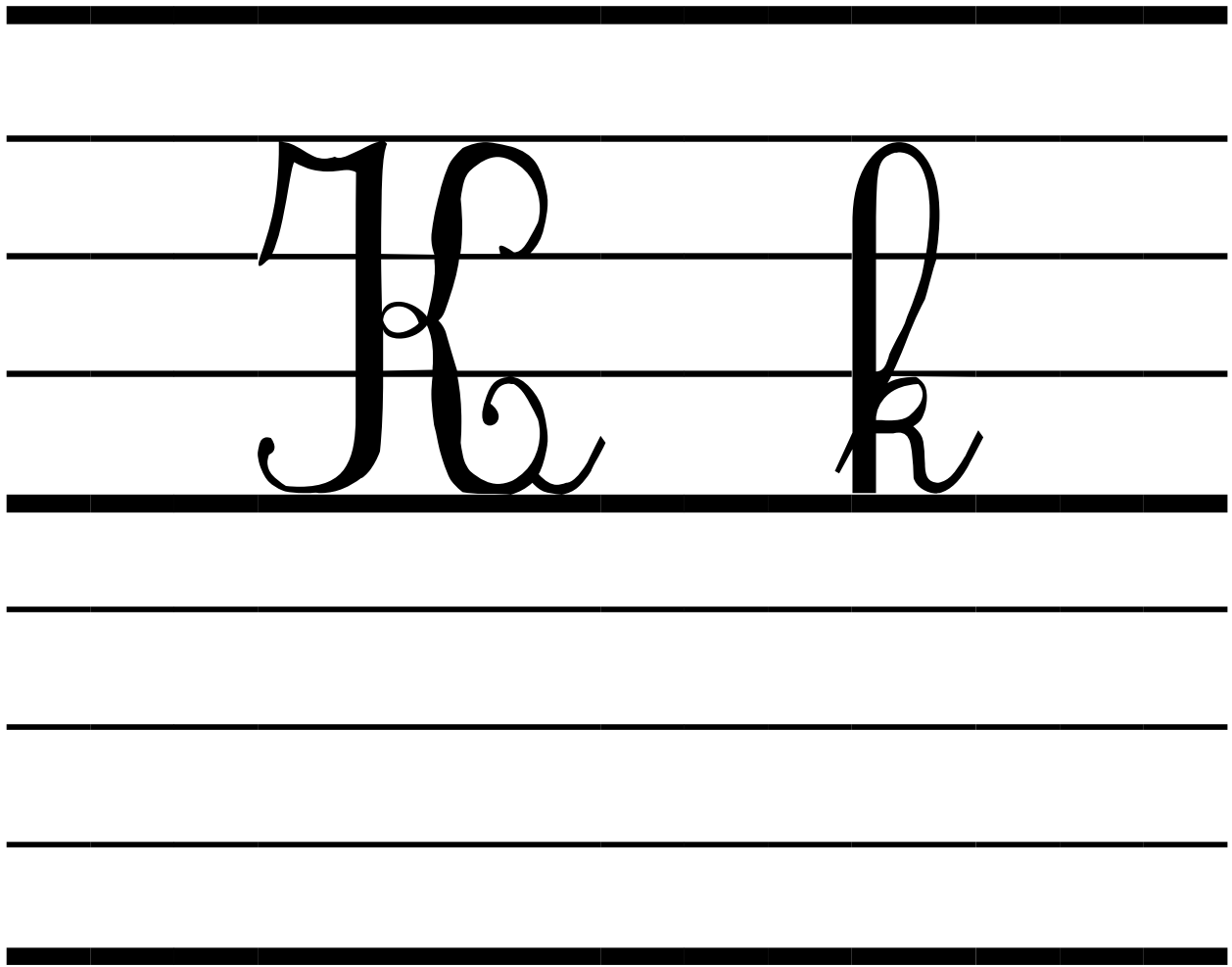




**I i**



j j



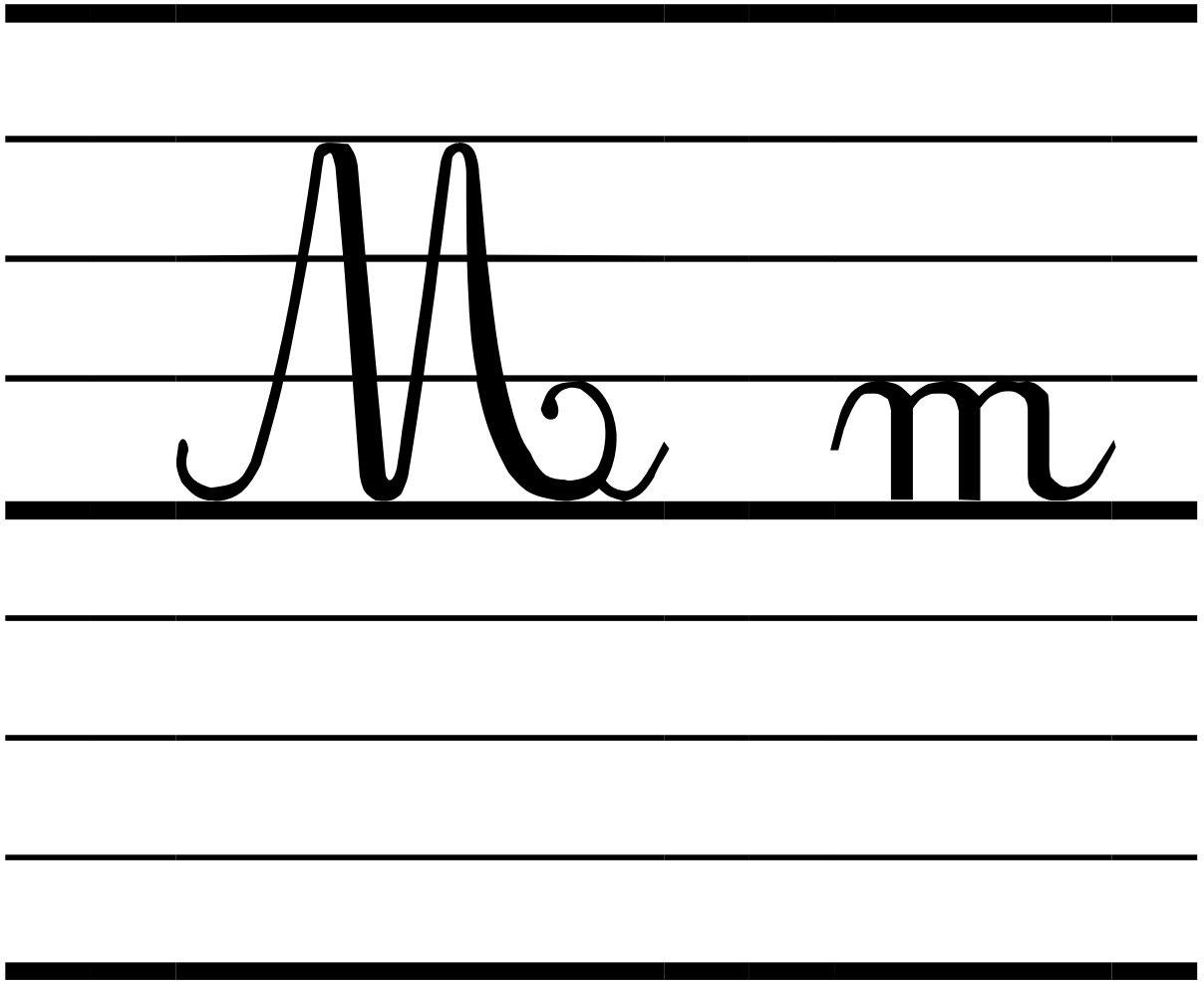
**K**

**k**

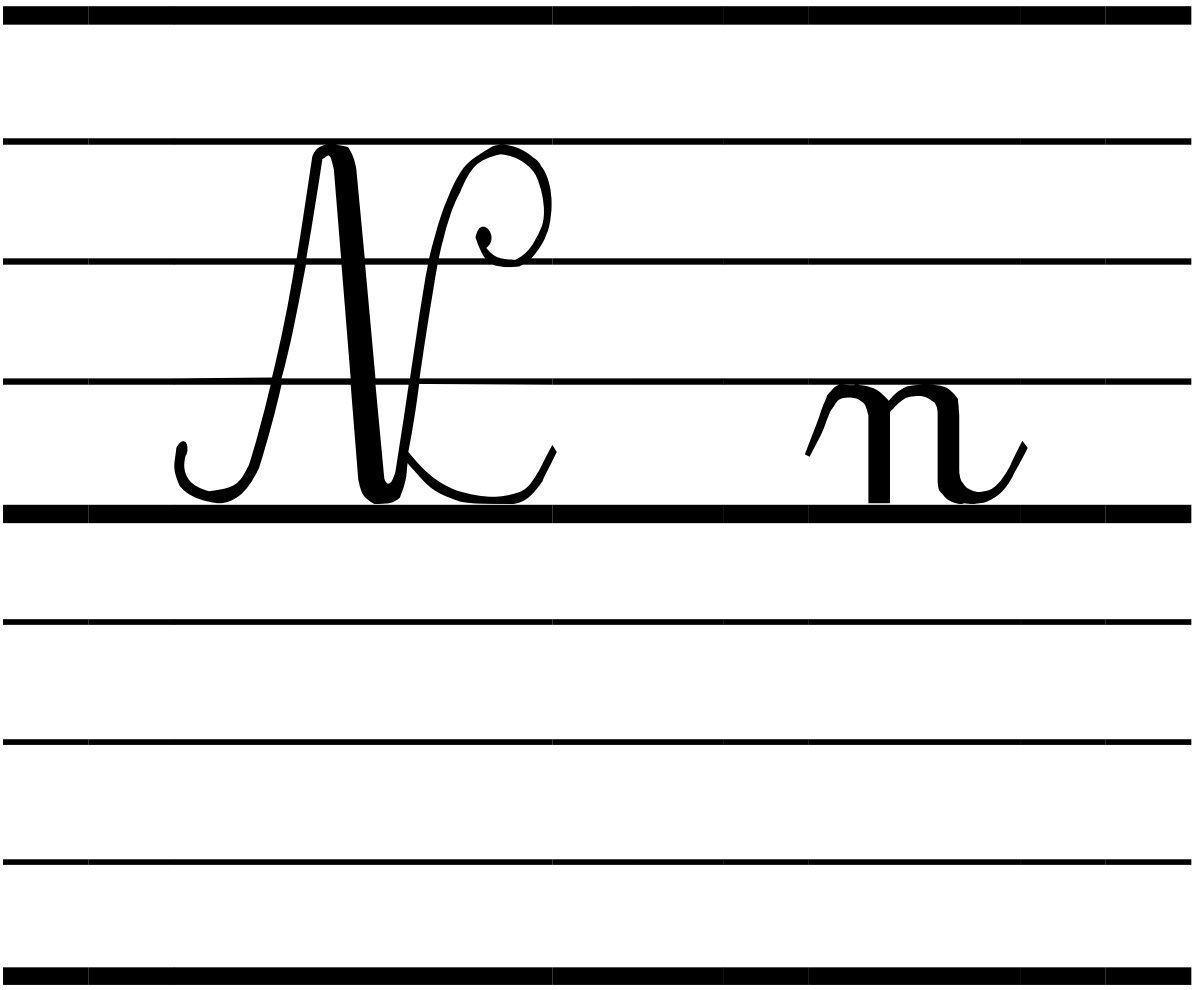
L l

L

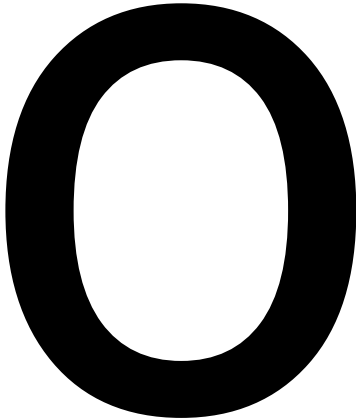
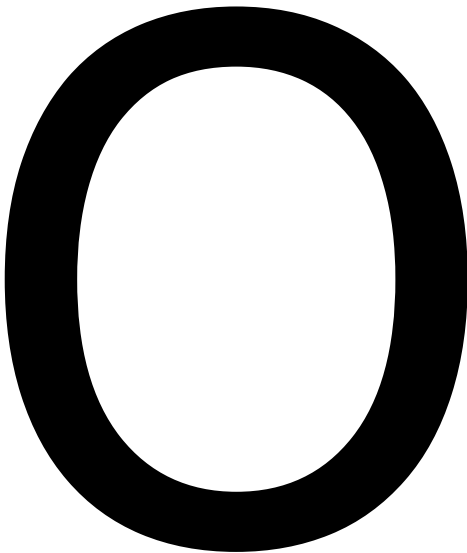
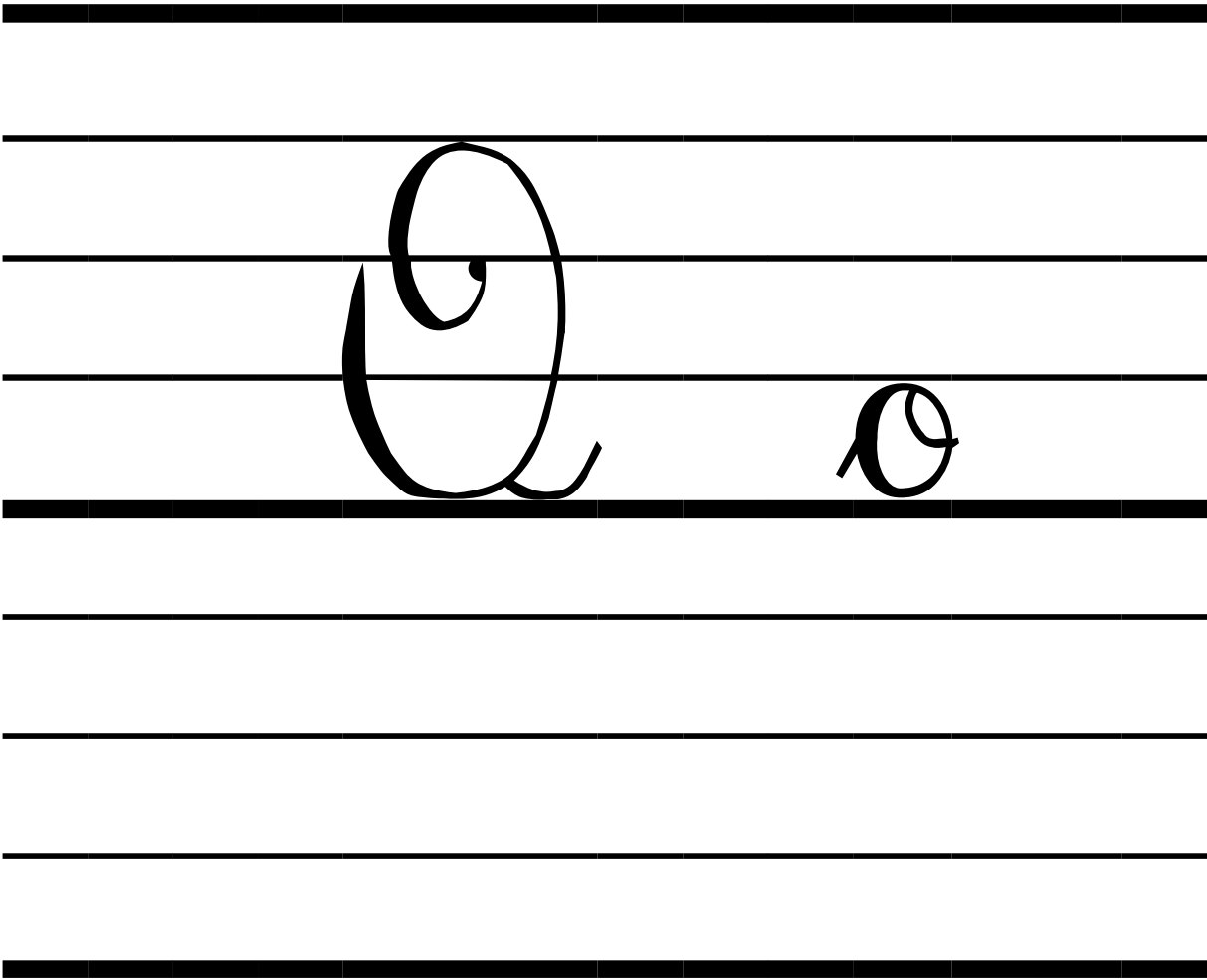
l

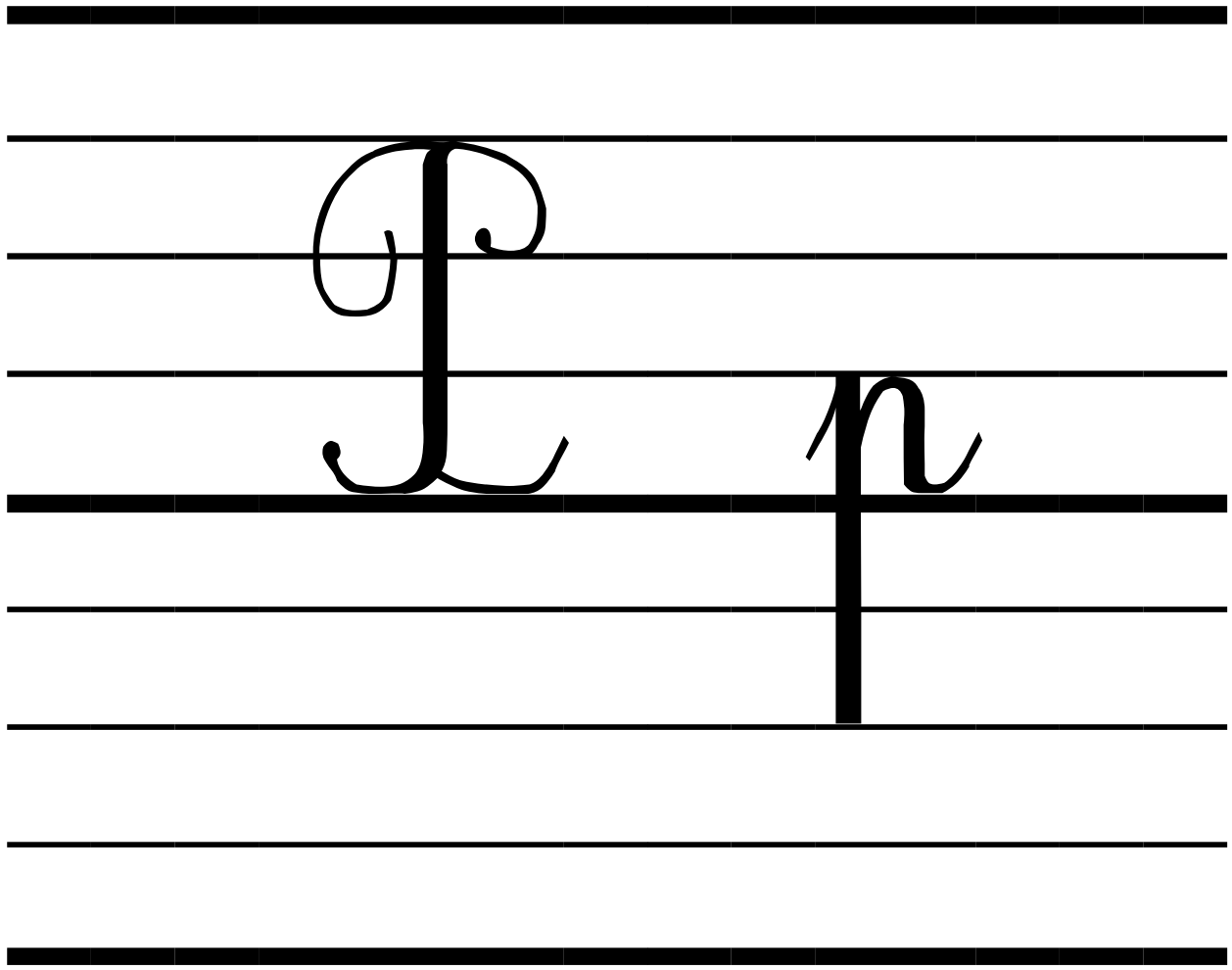


M m



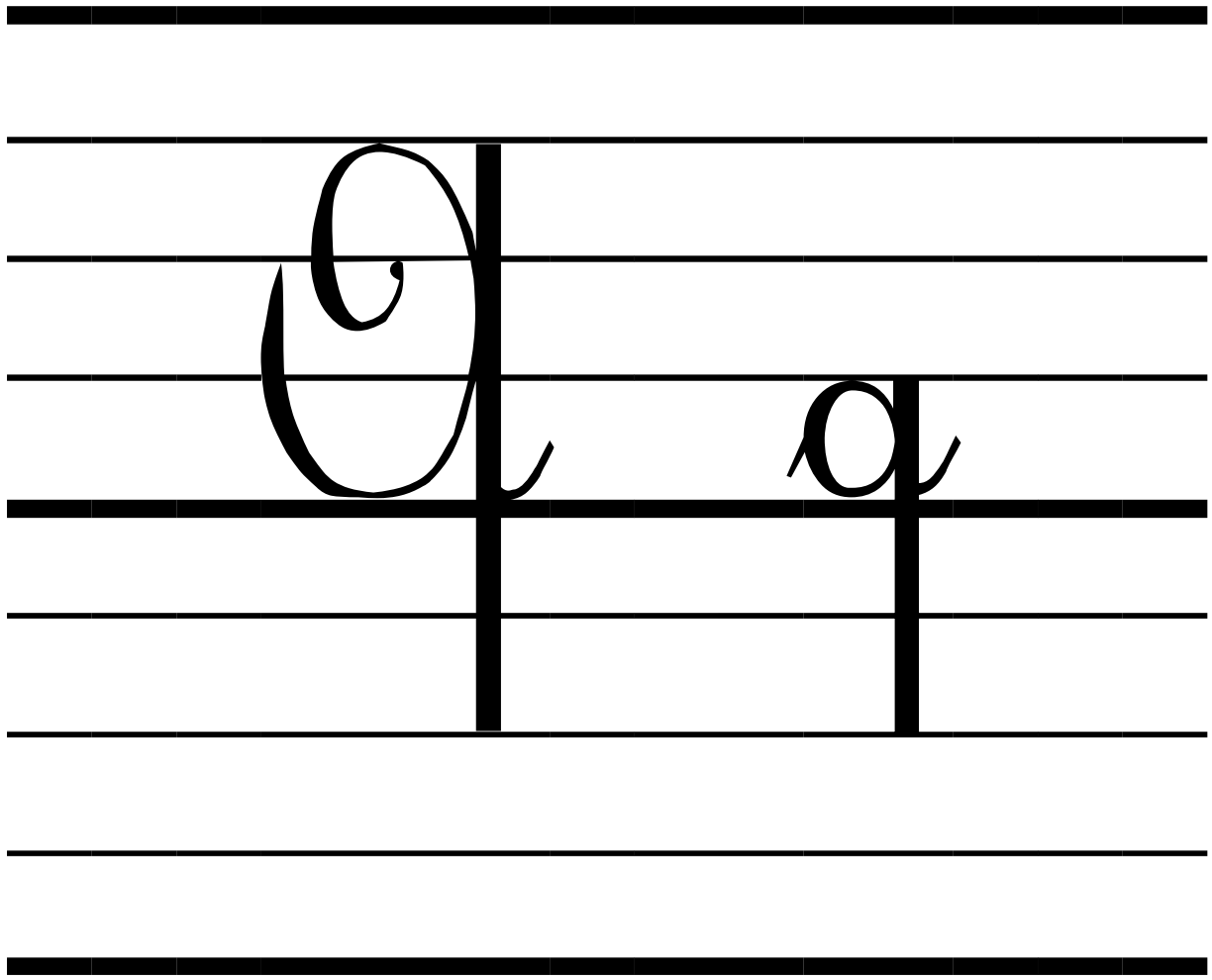
**N n**





P p



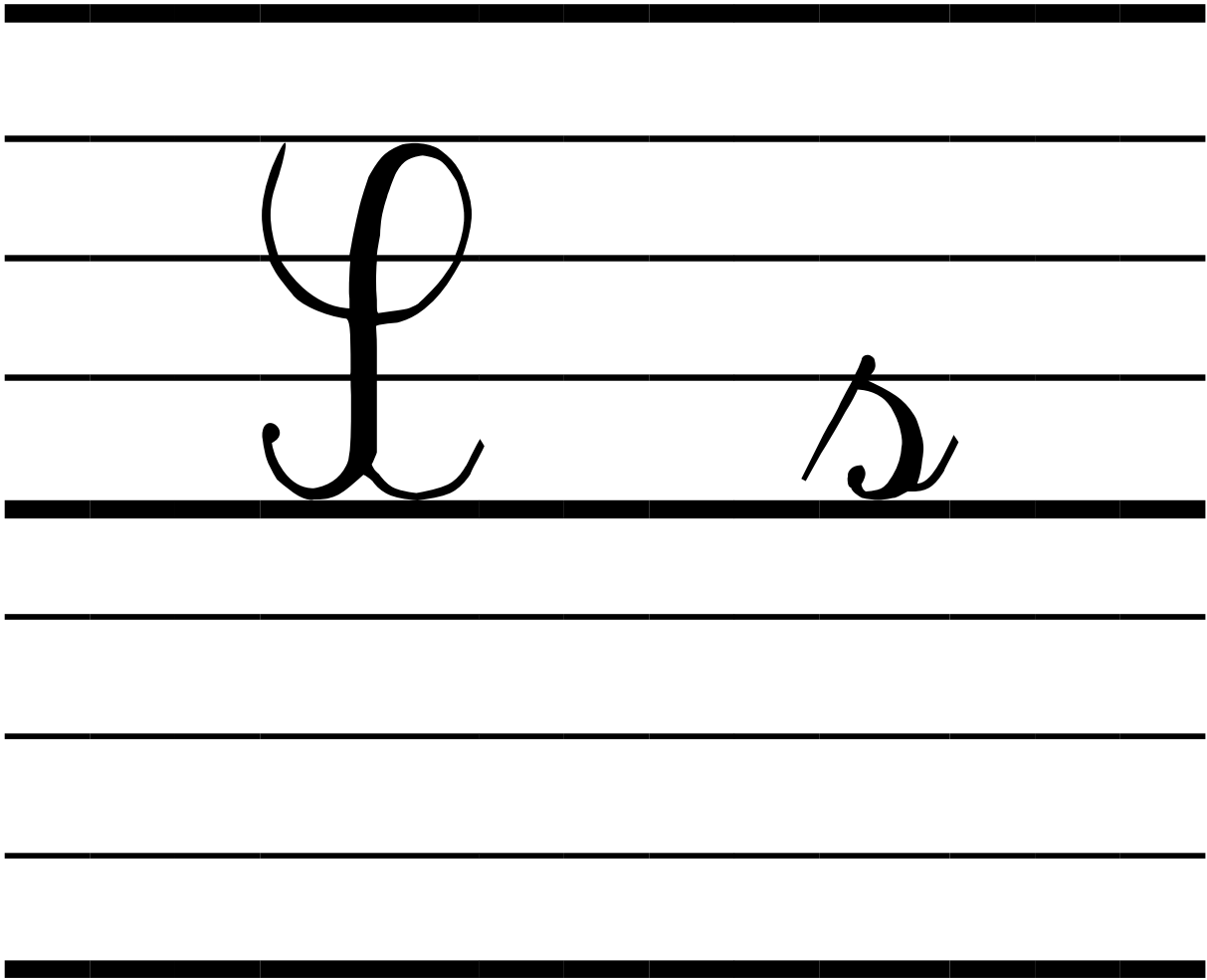


Q

q

Rr

Rr



S

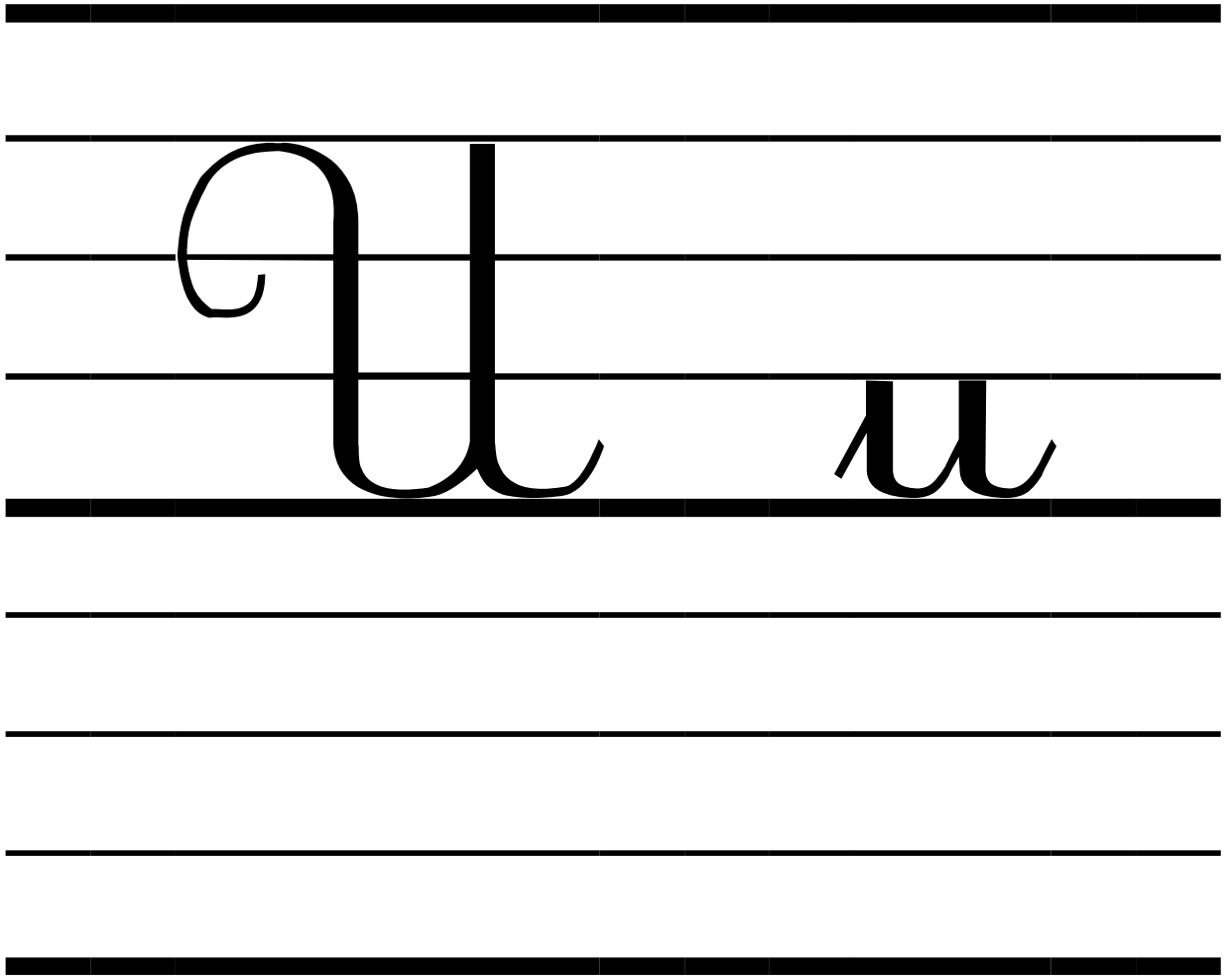
s

*C*

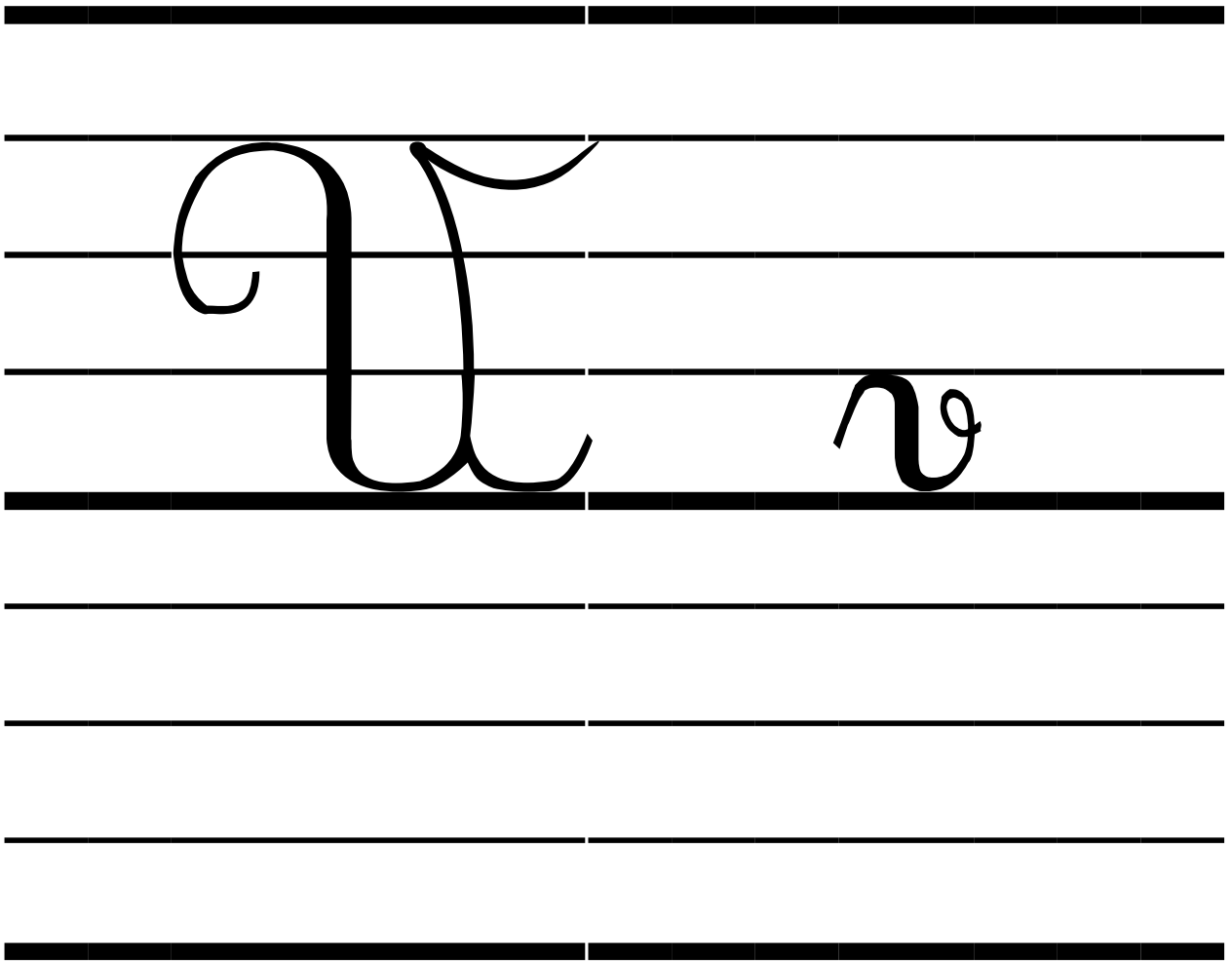
*t*

**T**

**t**

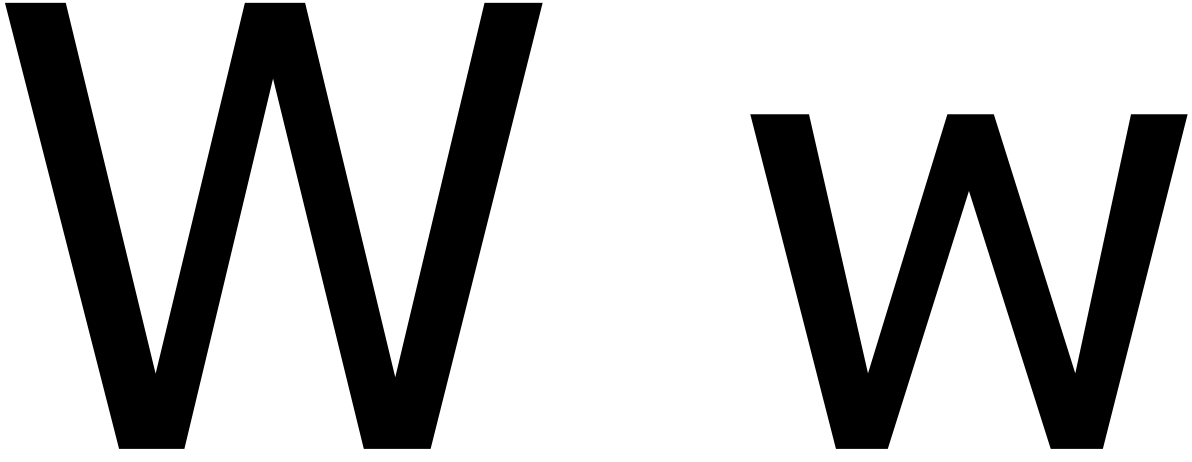
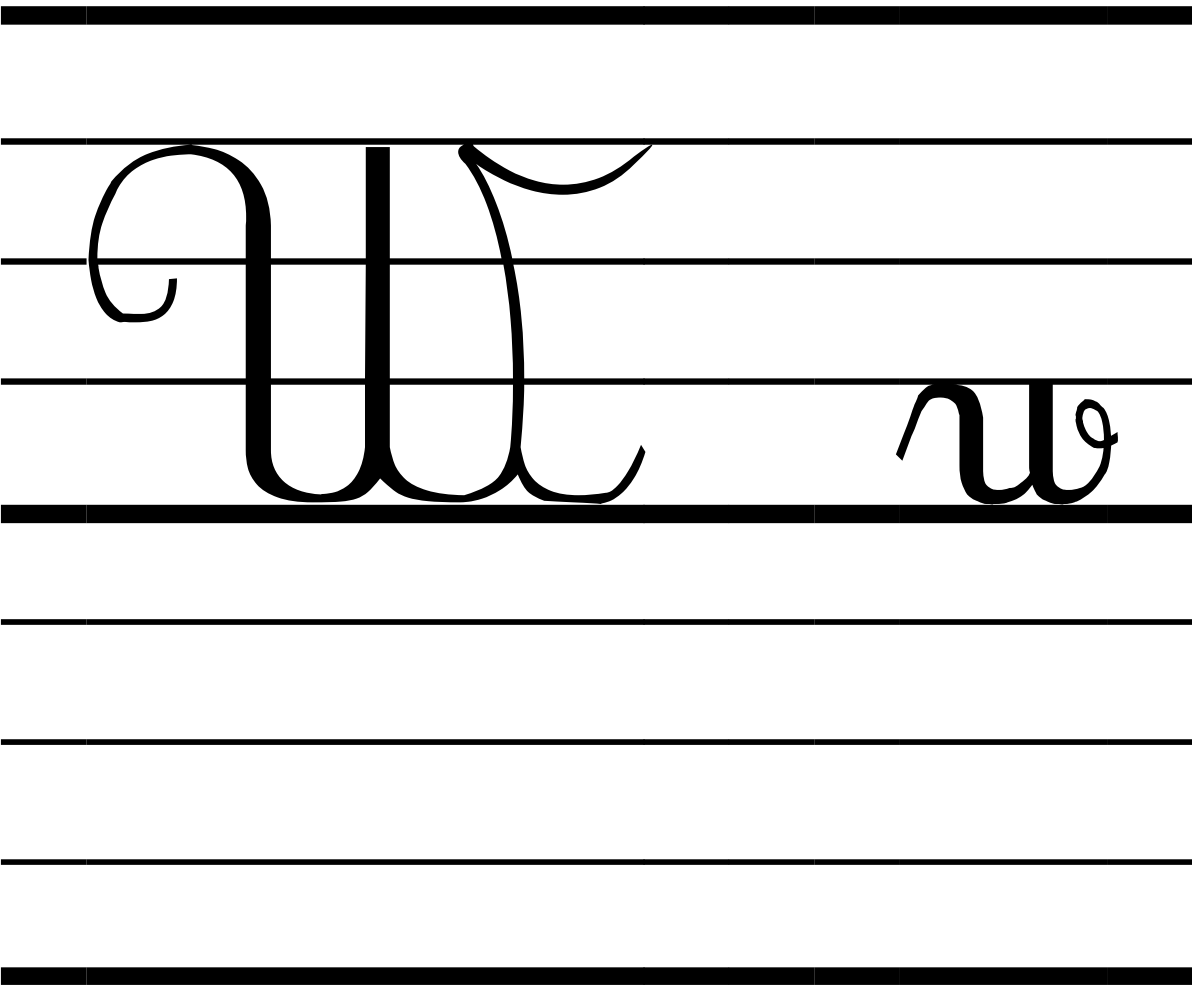


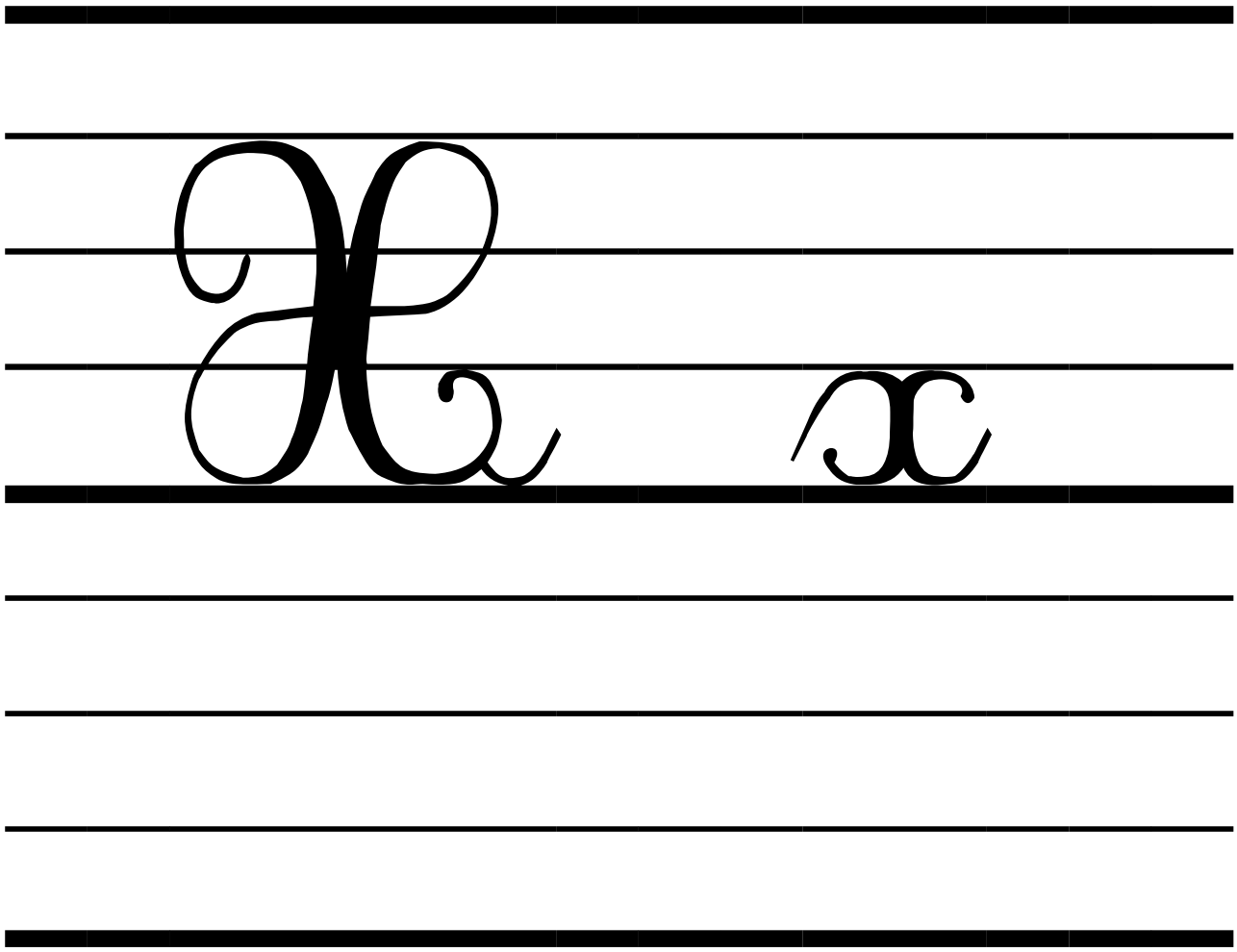
U u



**V**

**v**

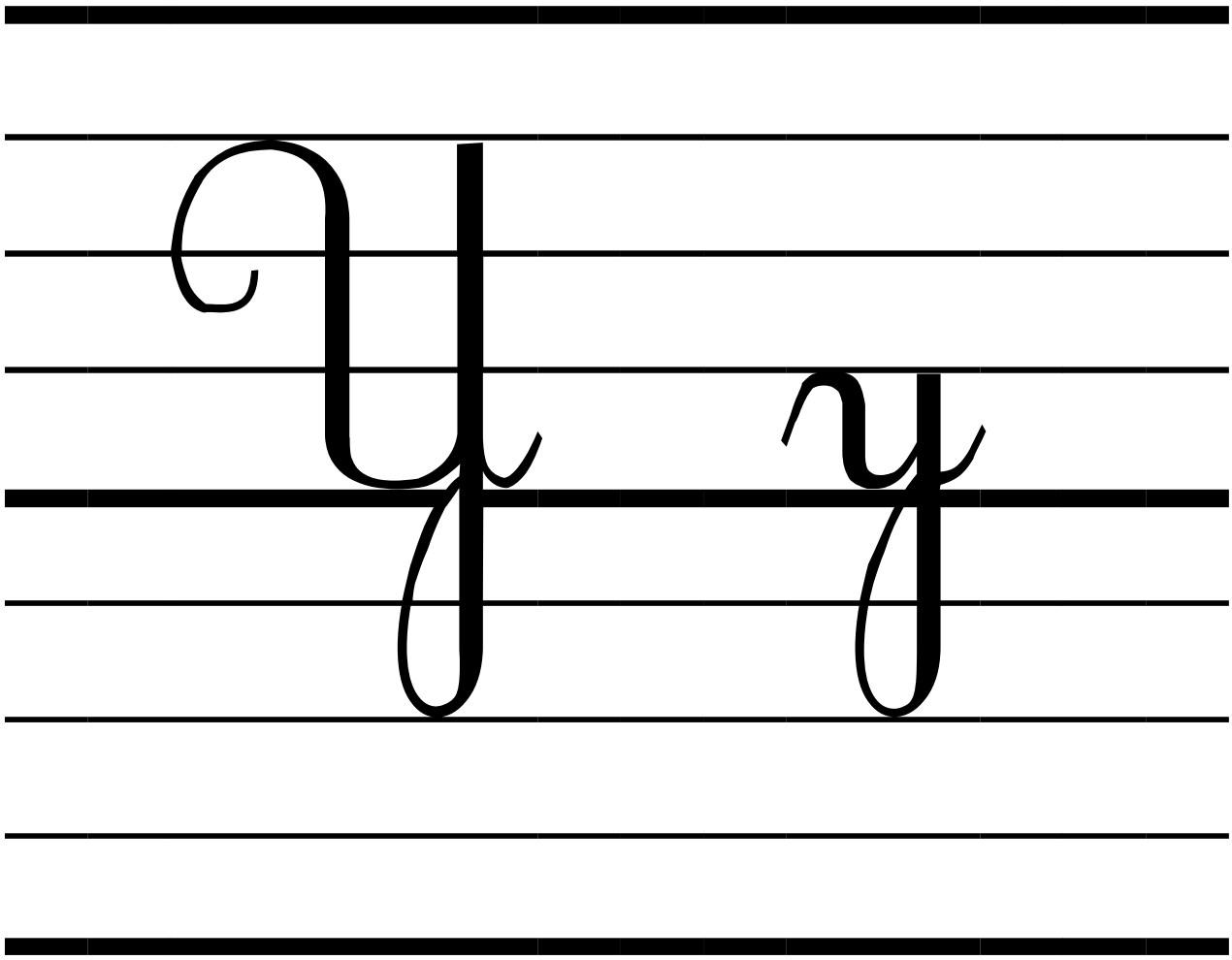




**X**

**x**





**Y**

**y**



Z

z